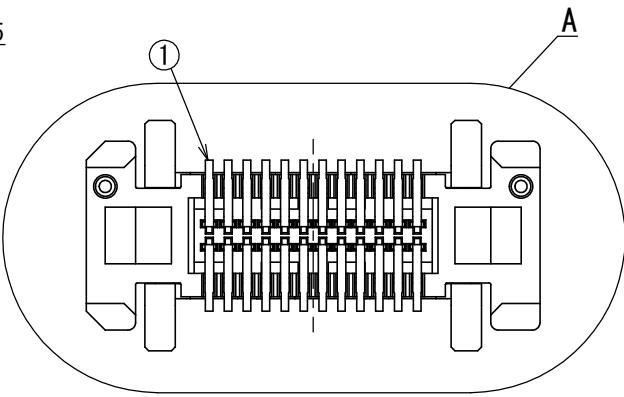
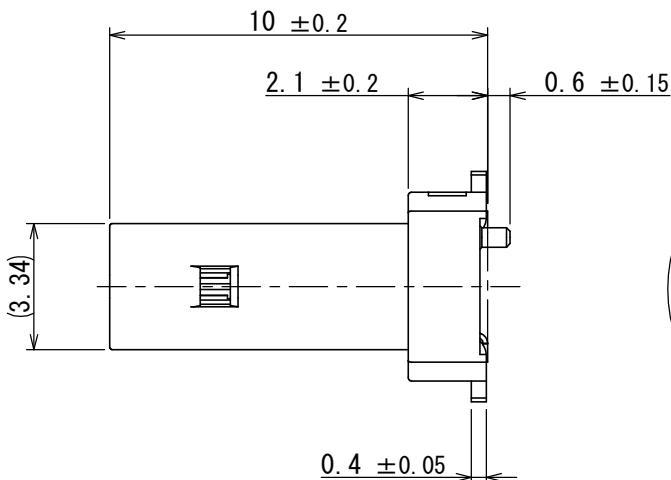
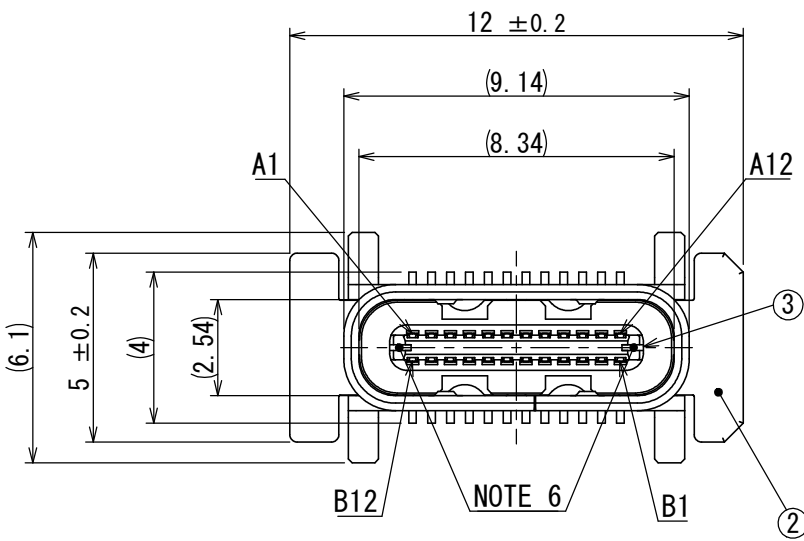


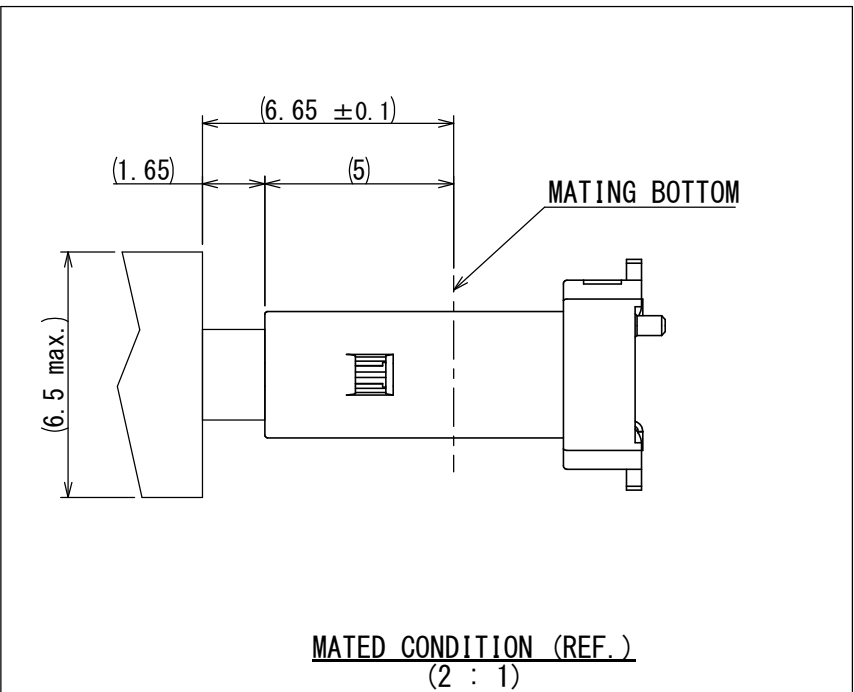
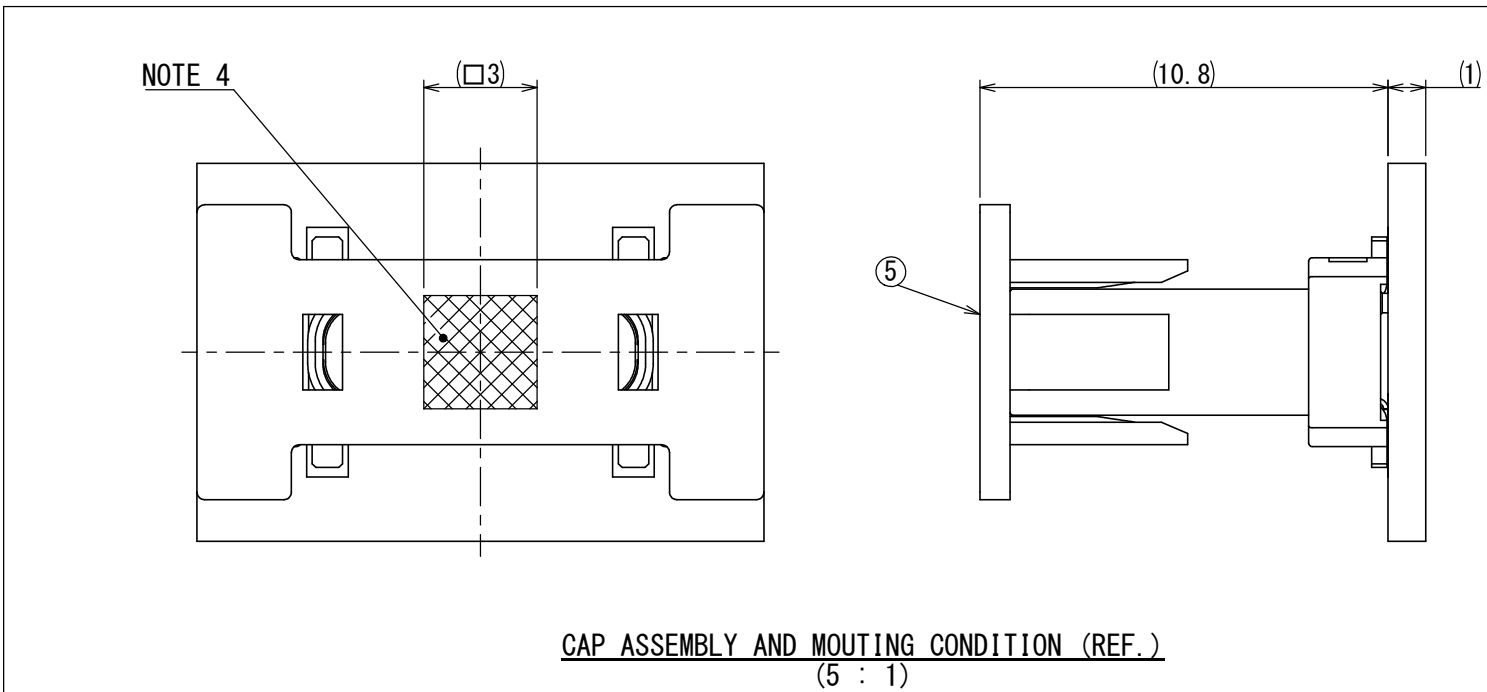
SURFACE VIEW FROM CONNECTOR MOUNTING SIDE.
APPLICABLE P.C.B DIMENSION (REF.)
適合基板寸法 (参考)

詳細図A
スケール(10 : 1)



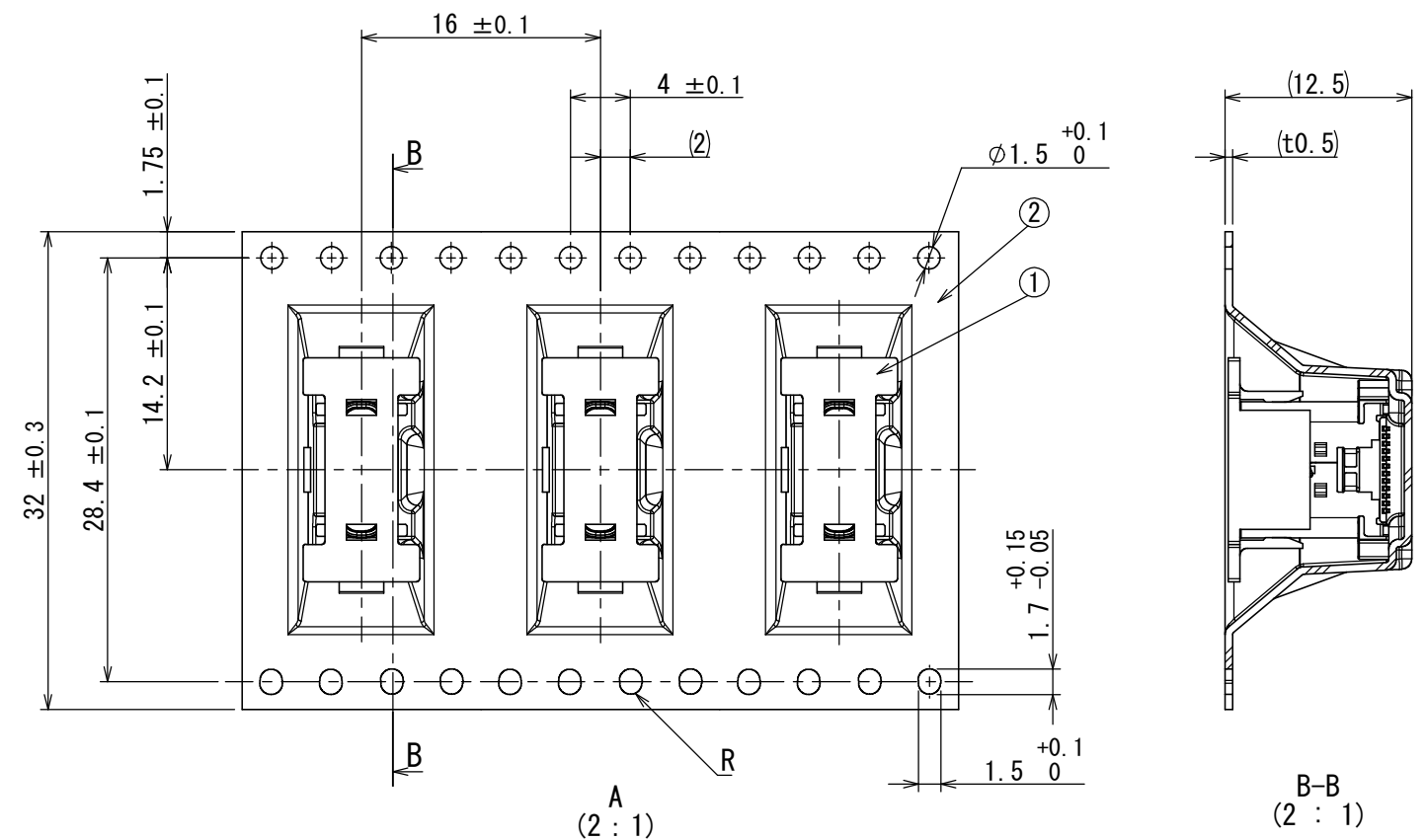
- NOTE 1. COPLANARITY OF SMT TERMINAL SHALL BE 0.1 MAXIMUM.
NOTE 2. MATING DIMENSIONS CONSIST OF "Universal Serial Bus Type-C Cable and Connector Specification Revision 1.4"
NOTE 3. THE SHELL LENGTH IS LESS THAN THE 6.2MM RECOMMENDED IN THE USB STANDARD. THE SYSTEM IMPLEMENTER IS RESPONSIBLE FOR ACHIEVING END PRODUCT RELIABILITY FOR THE MATED CONNECTOR CONDITION. REFER TO USB TYPE-C CABLE AND CONNECTOR SPECIFICATION REVISION 1.4 SECTION 3.2.1 NOTE 7.
NOTE 4. VACUUM AREA.
NOTE 5. LOT NO. IS MARKED AS SHOWN IN BELOW FIGURE MARKING.
(EX.) 9 6 1 1
-9 : MANUFACTURE YEAR. (LAST 1 DIGIT OF A.D.)
-6 : MANUFACTURE MONTH. (JAN. TO SEP. : 1 TO 9, OCT. : A, NOV. : B, DEC. : C)
-11 : MANUFACTURE DAY. (1 TO 31)
NOTE 6. METAL EXPOSED AREA SIZE COULD BE SLIGHTLY CHANGED BASED ON MOLDING PROCESS CONDITION IN EACHLOT, HOWEVER THIS WOULD NOT AFFECT CONNECTOR FUNCTION.
NOTE 7. PLEASE TAKE THAT DIMENSIONS OF THE SHAPES IN THIS DRAWING ARE SUBJECT TO CHANGE.
NOTE 8. PIN ASSIGNMENT (FRONT VIEW)

Pin No.	A1	A2	A3	A4	A5	A6	A7	A8	A9	A10	A11	A12
	GND	TX1+	TX1-	V _{BUS}	CC1	D+	D-	SBU1	V _{BUS}	RX2-	RX2+	GND
Pin No.	B12	B11	B10	B9	B8	B7	B6	B5	B4	B3	B2	B1
	GND	RX1+	RX1-	V _{BUS}	SBU2	D-	D+	CC2	V _{BUS}	TX2-	TX2+	GND



5	CAP	1	THERMOPLASTIC RESIN	COLOR:BLACK	
4	SHELL	1	STAINLESS STEEL	NICKEL PLATING	
3	MID PLATE	1	STAINLESS STEEL	NICKEL PLATING	
2	INSULATOR	1	THERMOPLASTIC RESIN	COLOR:BLACK	
1	CONTACT	24	COPPER ALLOY	CONTACT AREA NICKEL:2 μm MIN. PALLADIUM-NICKEL:0.75 μm MIN. GOLD FLASH:0.05 μm MIN. SOLDER TAILS: NICKEL:2 μm MIN. GOLD FLASH:0.03 μm MIN.	

仕様書(SPECIFICATION) JACS-30368	第1版(ORIGINAL DATE) 25/JUN/2019	尺度(SCALE) 5 : 1	シリーズ(SERIES) DX07	日本航空電子工業株式会社
一般公差(GENERAL TOLERANCE)	製図 DR.	名称(TITLE) DX07S024WJ4	JAE CONNECTOR	
寸法(DIMENSION)	担当 CHK.	Y. SATOU	JAPAN AVIATION ELECTRONICS INDUSTRY, LTD.	
角度(ANGLES)	査閲 APPD.	—	図面番号(DRAWING NO.) SJ121804	
× ±0.8	承認 APPD.	Y. SAITOU	版数(VER.) 1	
× ±0.4				
× ±0.1				
× ±				
単位(UNIT) : mm				



The diagram illustrates the layout of the connector assembly. It features a horizontal line representing the assembly axis, with various segments and dimensions labeled above it. From left to right, the segments are:

- MIN 10 EMPTY CAVITY**: A segment on the far left.
- ENDING PORTION**: A segment indicated by a double-headed arrow above the line.
- CONNECTOR 450 PCS**: A segment representing the main body of the connector, with a length dimension of 450 PCS indicated above it.
- BEGINING PORTION 400mmMIN**: A segment on the right side, with a length dimension of 400mmMIN indicated above it.
- MIN 7 EMPTY CAVITY**: A segment on the far right.

Below the horizontal line, a series of rectangular blocks represent the individual components. The first 10 blocks are aligned under the "MIN 10 EMPTY CAVITY" segment. The next 450 blocks are aligned under the "CONNECTOR 450 PCS" segment. The final 7 blocks are aligned under the "MIN 7 EMPTY CAVITY" segment. A break symbol (two wavy lines) is shown at the end of the component sequence, indicating that the assembly continues beyond the shown length.

An arrow labeled **DIRECTION** points to the right, indicating the orientation of the assembly.

R-Pb (Pb-Free)

台灣航空電子股份有限公司			
MADE IN TAIWAN			
品名	DX07S024WJ4R450		
收納數	450	個入	製造年月日
備考	TB3216		

32:TAPE WIDTH / 16:FEED PITCH / NUMBER OF CONNTECTOR

4	REEL	1	PS	—	—
3	COVER TAPE	1	PET	—	—
2	CARRIER TAPE	1	PS	—	—
1	DX07S024WJ4	450	—	—	SJ121804
符号 NO.	名称 DESCRIPTION	数量 QTY	材料 MATERIAL	仕上 FINISH	图番 DWG NO.

仕様書 (SPECIFICATION) JACS-30368		第1版 (ORIGINAL DATE) 25/JUN/2019		尺度 (SCALE) 1:5 シリーズ (SERIES) DX07 日本航空電子工業株式会社		JAE JAPAN AVIATION ELECTRONICS INDUSTRY, LTD. 図面番号 (DRAWING NO.) SJ121805	版数 (VER.) 1
一般公差 (GENERAL TOLERANCE)		製図 DR.	—	名称 (TITLE) DX07S024WJ4R450			
寸法 (DIMENSION)	角度 (ANGLES)	担当 CHK.	Y. SATOU				
	± 0.8 $\times \pm 0.4$ $\times \times \pm 0.1$ $\times \times \times \pm$	$\times^\circ \pm$ $\times^\circ \times' \pm$	査閲 APPD. 承認 APPD. Y. SAITOU				
単位 (UNIT) : mm				質量 (MASS)			