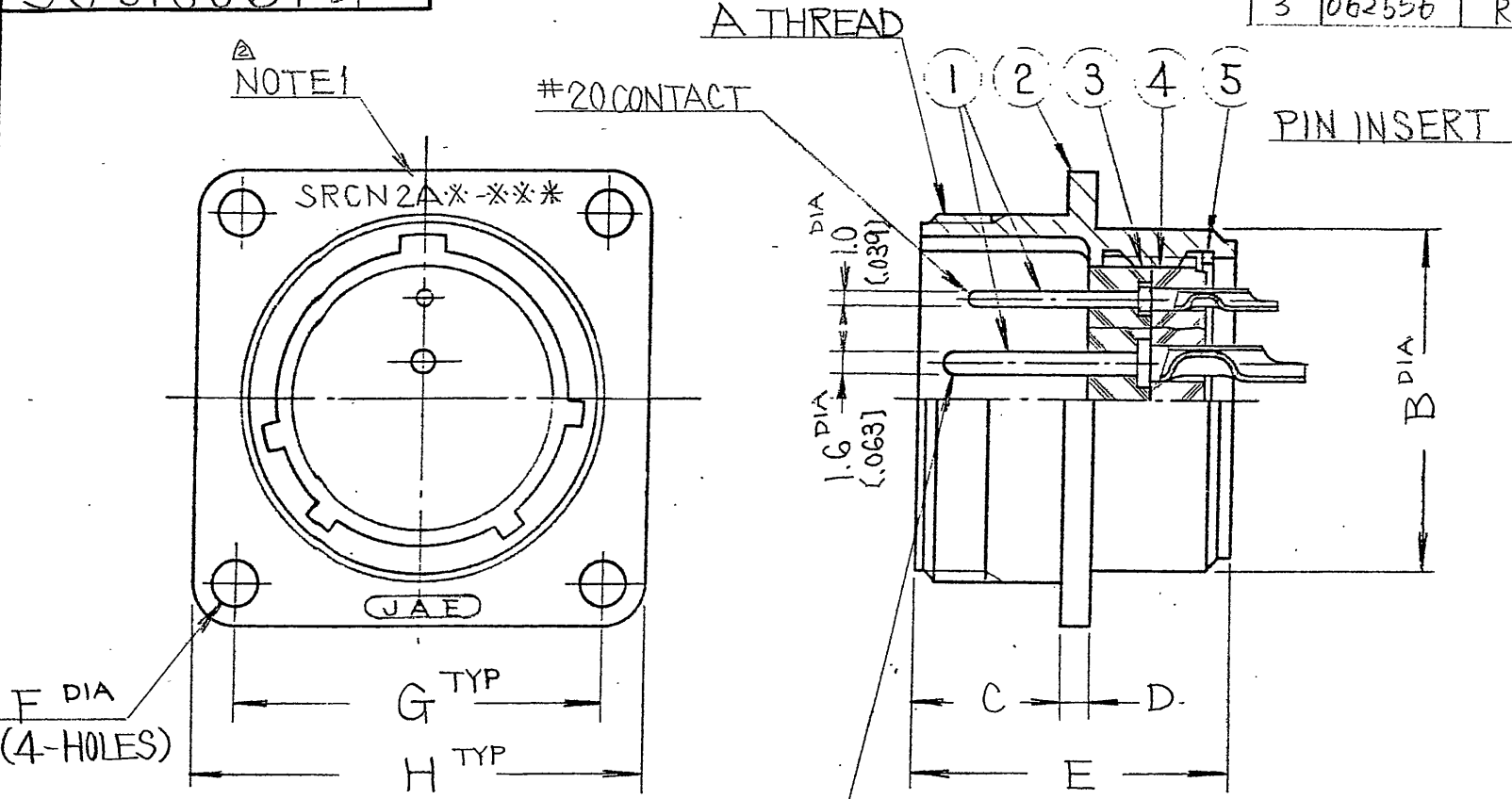


DWG. NO. SJ016061-E 3 SYM.

SYM.	DCN NO.	DESCRIPTION	DATE	DRAWN	CHECKED	APP'D	APP'D
1	15967	CHANGED STAMPING POSITION	1-FEB-83	K. Ota	H. Inoue	S. Iwashina	I. Kawamura
3	062556	REVISED NOTE	16-MAR-2007	T. Takesita	E. Motomoto	-	A. Onogawa



SHELL SIZE	A THREAD	B DIA	C	D	E	F DIA	G TYP	H TYP
13	M18 P1	16 (1.630)	10.5 (1.413)	2.0 (1.0179)	22.5 (1.886)	3.2 (1.26)	20.00 (1.787)	26 (1.024)
16	M22 P1	20 (1.787)	↑	↑	↑	↑	23.00 (1.906)	29 (1.142)
21	M26 P1	24 (1.945)	↓	↓	↓	↓	26.00 (1.024)	32 (1.260)
25	M30 P1	28 (1.102)	10.5 (1.413)	2.0 (1.0179)	22.5 (1.886)	3.2 (1.26)	29.00 (1.142)	35 (1.378)

NOTES
1. METAL STAMPS "SRCN2A*-***" (JAE)
2. FOR AVAILABLE INSERT ARRANGEMENTS, ALTERNATE POSITIONS, ELECTRICAL SPECIFICATIONS, AND CONTACT SIZE, REFER TO SJ014069 OR CONSULT FACTORY.
3. IDENTIFICATION PER JIS C 5432 AS FOLLOWS.

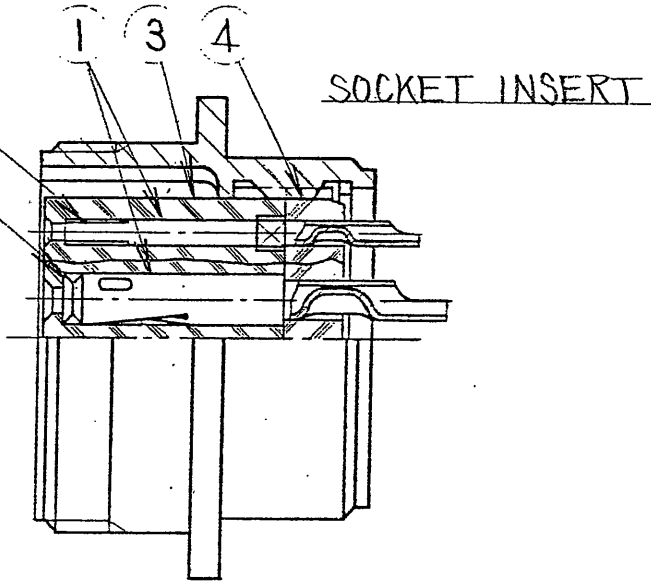
CNROISR *O*O*
M - PIN CONTACT
CONTACT TYPE F - SOCKET CONTACT
(OMIT FOR NORMAL)
ALTERNATE INSERT POSITION
NUMBER OF CONTACTS
SHELL SIZE

IDENTIFICATION

SRCN 2 A * - * * *
SERIES PREFIX
SHELL STYLE
CLASS
SHELL SIZE
ALTERNATE INSERT POSITION (OMIT FOR NORMAL)
CONTACT TYPE
P - PIN CONTACT, S - SOCKET CONTACT
NUMBER OF CONTACTS

REQUIREMENTS

TEMPERATURE -25°C ~ +85°C
RELATIVE HUMIDITY 85% MAX
INSULATION RESISTANCE 1000MΩ MIN (AT DC 500V)

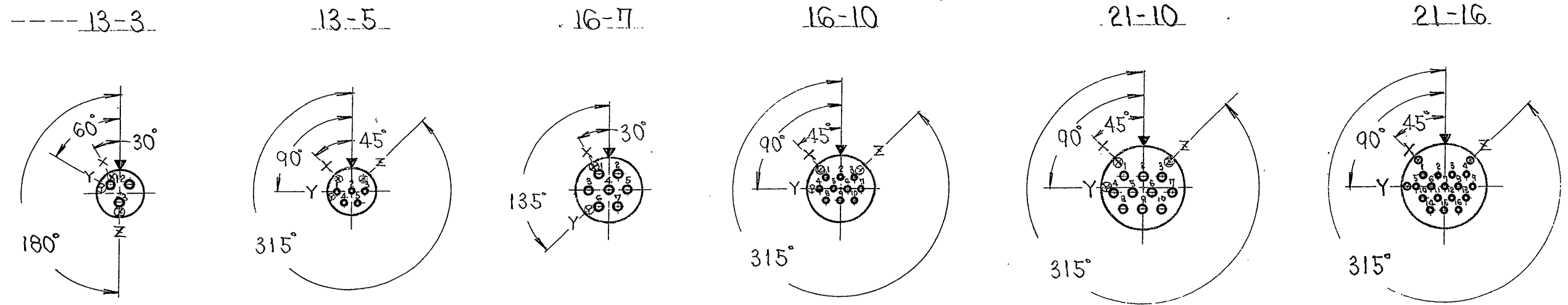


ITEM	DESCRIPTION	Q'TY	MATERIAL	FINISH	NOTE
5	RING RETAINING	1	COPPER ALLOY	NICKEL PLATING	
4	INSULATOR, REAR	1	PLASTIC	NONE	UL FLAME CLASS 94V-0
3	INSULATOR, FRONT	1	PLASTIC	NONE	UL FLAME CLASS 94V-0
2	SHELL	1	ALUMINUM ALLOY	SATIN NICKEL PLATING	
1	CONTACTS	-	COPPER ALLOY	SILVER PLATING	SEE NOTE 2

UNLESS OTHERWISE SPECIFIED DIMENSIONS ARE IN MILLIMETERS TOLERANCES ON: (INCHES)		DATE 5-26-1981	TITLE	
FRACTIONS	DECIMALS	XX	ANGLES	
±.015	±.01	±.02	± 1/2°	
TREATMENT OR FINISH		CHECKED M. Inoue, M. Takai	JAE-CONNECTOR.COM	
APP'D T. Yajima		CONNECTOR RECEPTACLE ELECTRICAL BOX MOUNTING SRCN 2A		
NEXT ASS'Y		USED ON		
NEXT ASS'Y		FINAL ASS'Y		
APPLICATION		QTY REQ'D		
SCALE NONE		DWG. SIZE B WT.		
SHEET		DWG. NO. SJ016061-E		

DWG. NO.	SYM.	SYM.	DCN NO.	DESCRIPTION	DATE	DRAWN	CHECKED	APP'D	APP'D
SJ.014069-E	3	2	DCN-14326	Add SRCN	81.5.26	M. Komatsu	M. Komatsu	T. Yajima	
		3	062556	REVISED SPECIFICATION	2007.3.16	t. takesita	g. matsumoto	-	A. Onogawa

INSERT
ARRANGEMENT



OPERATING CURRENT --- 10A
CONTACT SIZE ----- #16

5A
#20

10A
#16

5A
#20

10A
#16

5A
#20

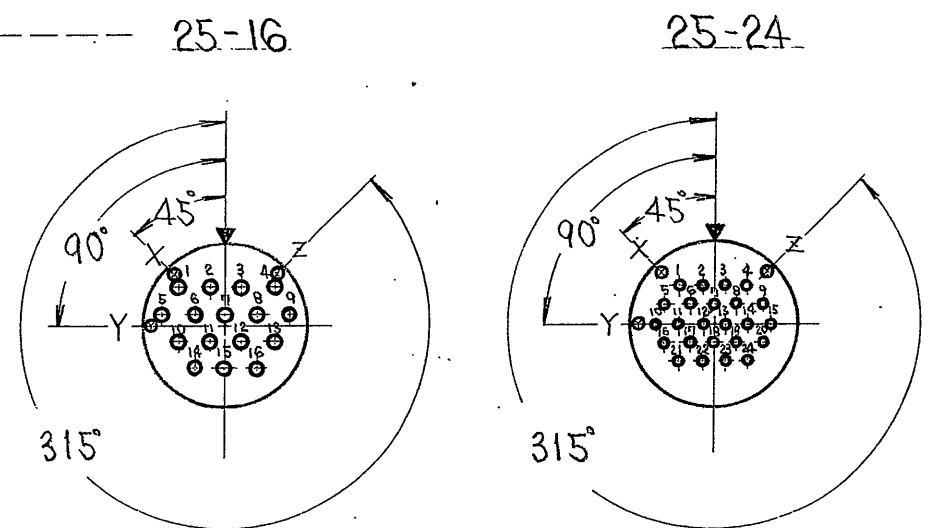
SERVICE RATING

WITHSTANDING VOLTAGE AC 1000 V.r.m.s. (FOR 1 MINUTE)
INSULATION RESISTANCE 1000 MΩ MIN (AT D.C. 500V)

NOTES

- 1. ALL INSERT LAYOUTS ARE SHOWN IN FRONT-VIEW FROM ENGAGING FACE OF PIN INSERT (SOCKET INSERT OPPOSITE).
- 2. ▼ INDICATES LOCATION OF CENTERLINE OF KEY OR KEY WAY OF SHELLS IN FIXED NORMAL POSITION. FOR ALTERNATE INSERT POSITIONS, INSERT IS ROTATED AS SHOWN BY ARROW AND LETTERS.

INSERT
ARRANGEMENT



OPERATING CURRENT ----- 10A
CONTACT SIZE ----- #16

5A
#20

				ITEM	DESCRIPTION	Q'TY	MATERIAL	FINISH	PART NO.		
				UNLESS OTHERWISE SPECIFIED DIMENSIONS ARE IN INCHES TOLERANCES ON:		DATE 10-11-1974	TITLE △ INSERT ARRANGEMENTS SRC AND SRCN ELECTRICAL CONNECTORS			JAPAN AVIATION ELECTRONICS IND. CO. LTD. FACTORY NAKAGAMI-CHO, AKISHIMA-SHI TOKYO, JAPAN	
FRACTIONS		DECIMALS		ANGLES	DRAWN M. Sugita	CHECKED M. Yajima				DWG. NO. SJ 014069-E	
				±1/2	APP'D Hirotsugu	APP'D A. Kishimoto				SHEET	
TREATMENT OR FINISH											
NEXT ASS'Y		USED ON		NEXT ASS'Y		FINAL ASS'Y					
APPLICATION				QT'Y REQ'D							