



# DW4 Series

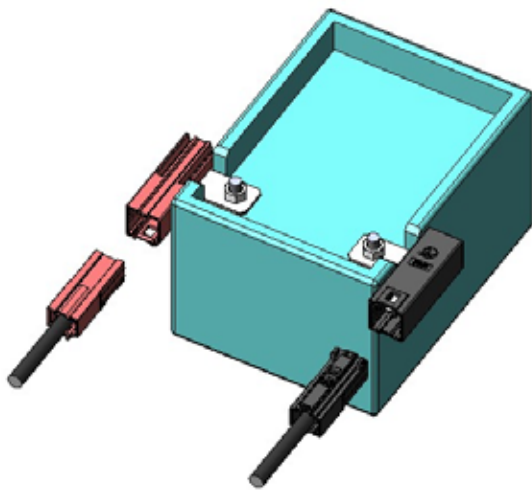
## (UL Recognized Product)

CONNECTOR

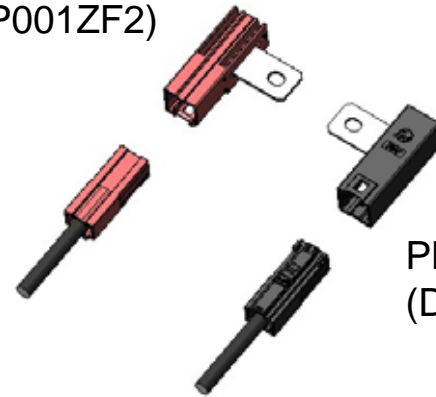
MB-0268-1

January 2014

**RoHS Compliant**



Plug Red  
(DW4P001ZF2)



Plug Black  
(DW4P001ZF1)

Drawing when DW4 is mounted


### <<Outline>>

The DW4 Series is a 1 pin connector compatible with 100A connection with cable and can be directly attached to the electrical pole of the battery module.

The DW4 Series is suitable for use in a wide range of applications such as storage battery systems, power supply systems, UPS, and other power supply control equipments.

The DW4 Series is a UL recognized product.

**Features**

- UL Recognized Product: File No.E67741 
- High-current: compatible with 100A
- Electrical Shock Prevention: structure that prevents a person's fingers from touching the terminals on receptacle side.
- Mis-mating prevention structure
- Lock structure

**General Specifications**

- No. of Contacts: 1 pin
- Rated Current: 100A
- Rated Voltage: 600V \*Note 1
- Contact Resistance:  
0.3mΩ max. (initial)
- Mating Cycles: 50 times
- Termination:  
Screw fixing (electrical pole side)  
Ultrasonic welding (electrical wire side)
- Durability: 50 times
- Operating Temperature:  
-40 Deg. C ~ +75 Deg. C
- Wire Size: 22sq (4AWG equivalent)

Note 1: Please contact us when considering use in usage environments that exceed 600V.

## Ordering Information

D W 4 P 0 0 1 Z F 1

Series

Modification Code

Plating of Contact Area  
F: Sn PlatingConnector Type  
P: Plug (with Cable)Connection Type  
Z: OthersNo. of Contacts  
001: 1 pos. (shown in 3 digit)

D W 4 R 0 0 1 W 0 0 1 2 8 8 0

Series

Last five digits of SJ No.

No. of Contacts  
001: 1 pos. (shown in 3 digit)

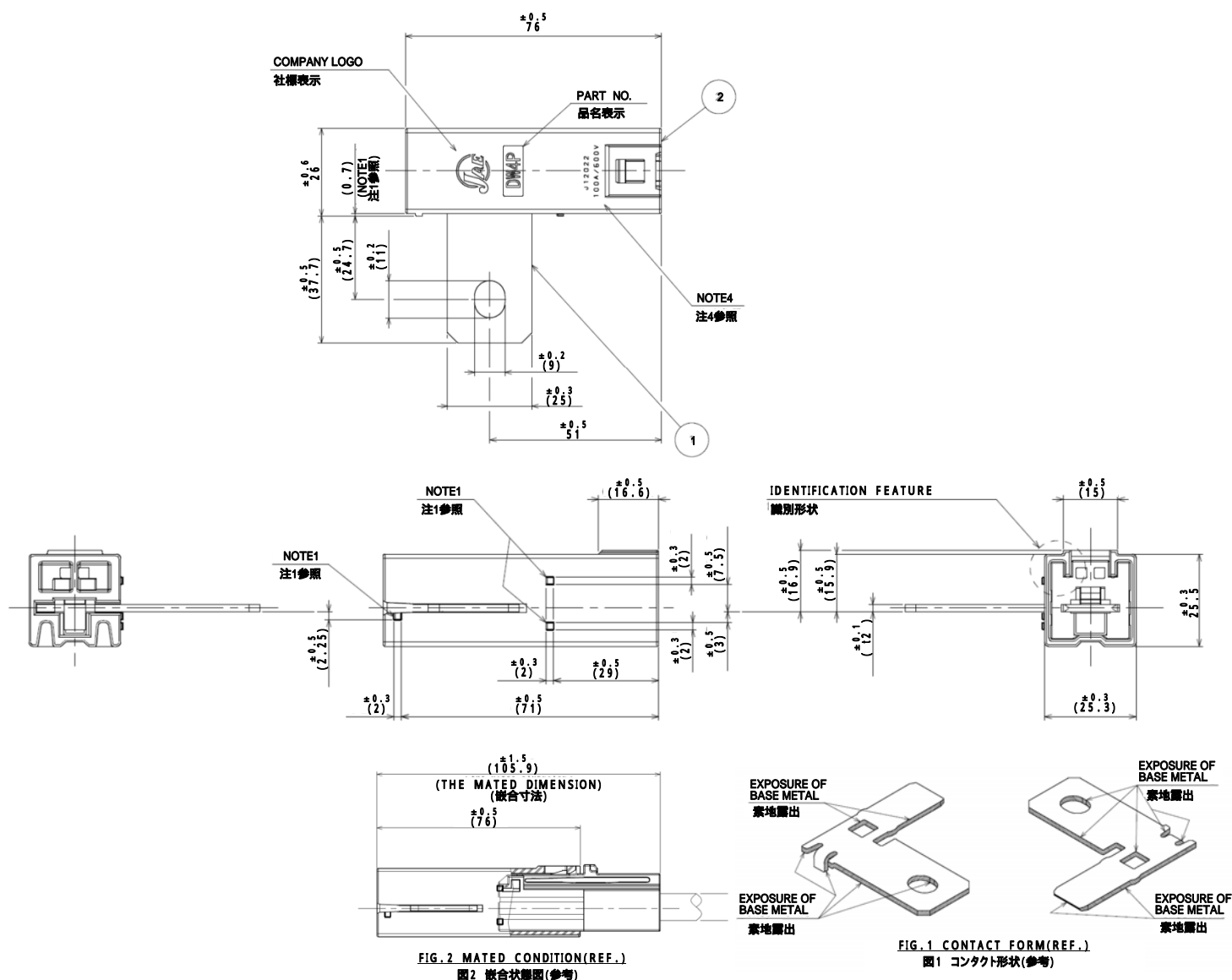
Modification Code

Connection Type  
W: Ultrasonic wave

## Product Drawing

## 1. Plug Black (Main Unit)

Part Number	DW4P001ZF1
SJ Drawing	SJ112878



NOTE1. THREE 0.7mm HEIGHT BOSSES ARE SET TO NOTED PART.

2. CONTACT PLATING IS AS FOLLOWS:

· CONTACT AREA: REFLOW TIN OVER NICKEL

· SCREW AREA: NICKEL

3. THE COPPER APPEARS TO THE HATCHING AREA OF FIGURE 1.

4. THE LOT NUMBER IS PRINTED TO THIS AREA.

注1. 本注記に示す箇所(3ヶ所)に高さ0.7mmのボスを設ける。

2. コタの表面処理は下記になる。

・接触部: Ni上リツ-Sn

・結線部: Ni

3. 図1中の斜線部は銅素地が露出する。

4. 図示の位置にロット番号を表示する。

LOT NUMBER DISPLAY EXAMPLE  
ロット番号表示例

J 12 0 22

DAY(01 ~ 31)

生産日

MONTH(1 ~ 9, OCT:0, NOV:X, DEC:Y)

生産月(1 ~ 9, 10月:0, 11月:X, 12月:Y)

YEAR(LAST DIGIT ONLY)

生産年(西暦末尾2桁)

PRODUCT CODE

製造コード

RATED CURRENT AND RATED VOLTAGE DISPLAY EXAMPLE  
定格電流 定格電圧 表示例

100A / 600V

RATED VOLTAGE

定格電圧

RATED CURRENT

定格電流

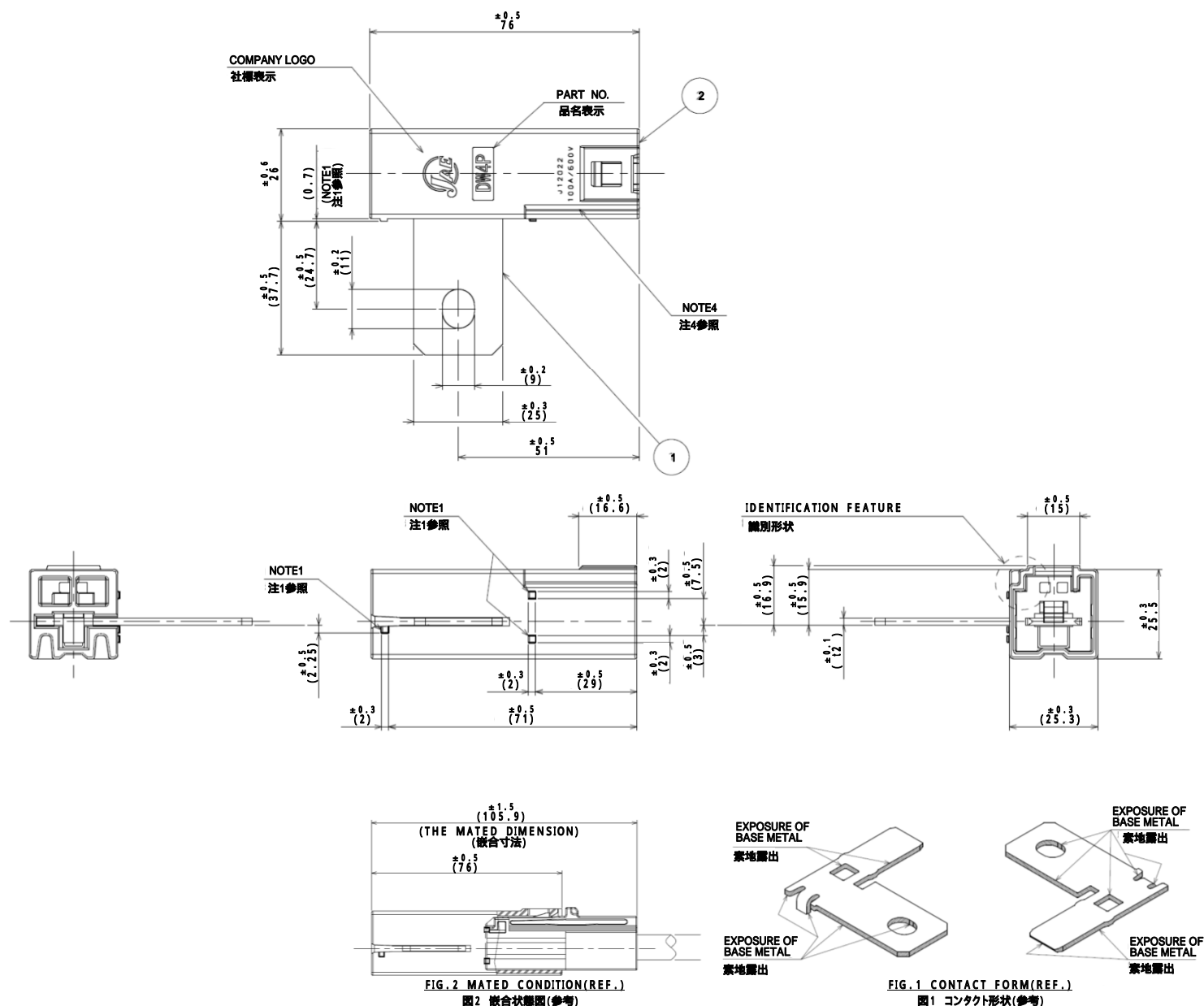
NOTE4

注4参照

2	HOUSING ハウジング	1	GLASS FILLED PBT ガラス入りPBT	COLOR: BLACK 色相: 黒色	
1	CONTACT コンタクト	1	COPPER ALLOY 銅合金	NOTE2 注2参照	NOTE3 注3参照
符号 NO.	名称 DESCRIPTION	個数 QTY.	材料 MATERIAL	仕上 FINISH	備考 REMARKS

## 2. Plug Red (Main Unit)

Part Number	DW4P001ZF2
SJ Drawing	SJ112879



- NOTE1. THREE 0.7mm HEIGHT BOSSES ARE SET TO NOTED PART.  
 2. CONTACT PLATING IS AS FOLLOWS:  
 · CONTACT AREA: REFLOW TIN OVER NICKEL  
 · SCREW AREA: NICKEL  
 3. THE COPPER APPEARS TO THE HATCHING AREA OF FIGURE 1.  
 4. THE LOT NUMBER IS PRINTED TO THIS AREA.

- 注1. 本注記に示す箇所(3ヶ所)に高さ0.7mmのボスを設ける。  
 2. コタの表面処理は下記になる。  
 ・接触部: Ni上リツロ-Sn  
 ・結線部: Ni  
 3. 図1中の斜線部は銅素地が露出する。  
 4. 図示の位置にロット番号を表示する。

LOT NUMBER DISPLAY EXAMPLE  
 ロット番号表示例

J 12 0 22

DAY(01 ~ 31)  
 生産日

MONTH(1 ~ 9, OCT:0, NOV:X, DEC:Y)  
 生産月(1 ~ 9, 10月:0, 11月:X, 12月:Y)

YEAR(LAST DIGIT ONLY)  
 生産年(西暦末尾2桁)

PRODUCT CODE  
 製造コード

RATED CURRENT AND RATED VOLTAGE DISPLAY EXAMPLE  
 定格電流 定格電圧 表示例

100A / 600V

RATED VOLTAGE  
 定格電圧

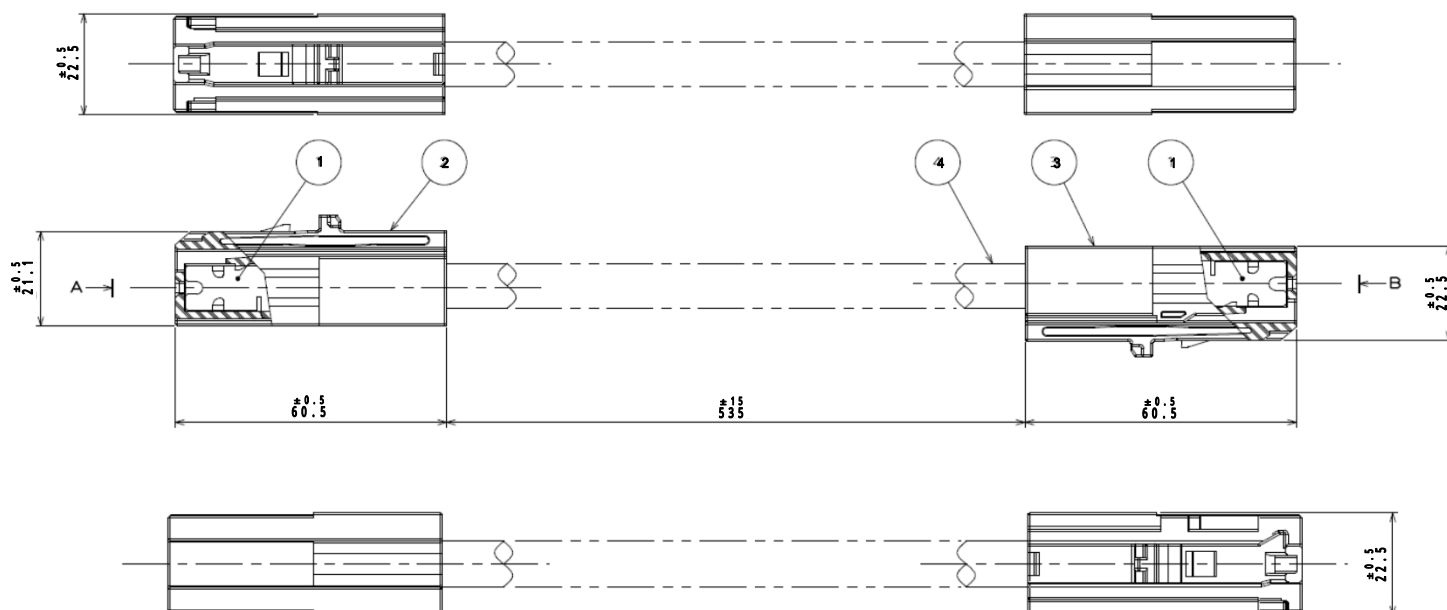
RATED CURRENT  
 定格電流

NOTE4  
 注4参照

2	HOUSING ハウジング	1	GLASS FILLED PBT ガラス入りPBT	COLOR: RED 色相: 赤色	
1	CONTACT コンタクト	1	COPPER ALLOY 銅合金	NOTE2 注2参照	NOTE3 注3参照
符号 NO.	名称 DESCRIPTION	個数 QTY.	材料 MATERIAL	仕上 FINISH	備考 REMARKS

### 3. Harness

Part Number	DW4R001W0012880ZF2
SJ Drawing	SJ112880



NOTE1. CONTACT PLATING IS AS FOLLOWS;

・CONTACT AREA :REFLOW TIN

2. THE COPPER APPEARS TO THE HATCHING AREA OF FIGURE 1.

注1.コンタクトの表面処理は下記のようになる。

・接触部：リフローSn

2.図1中の斜線部は銅素地が露出する。

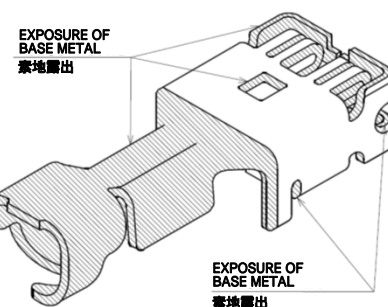


FIG.1 CONTACT FORM(REF.)

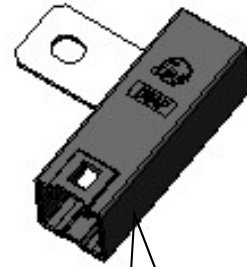
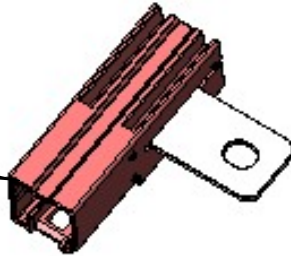
図1 コンタクト形状(参考)

4	WIRE 電線	1		COLOR : BLACK 色相 : 黒色	1283-F LF 4AWG (7/38/0.32)
3	HOUSING B ハウジング* B	1	GLASS FILLED PBT ガラス入りPBT	COLOR : RED 色相 : 赤色	
2	HOUSING A ハウジング* A	1	GLASS FILLED PBT ガラス入りPBT	COLOR : BLACK 色相 : 黒色	
1	CONTACT コンタクト	2	COPPER ALLOY 銅合金	NOTE1 注1参照	NOTE2 注2参照
符号 NO.	名 称 DESCRIPTION	個 数 QTY.	材 料 MATERIAL	仕 上 FINISH	備 考 REMARKS

## DW4 Series

**Plug (Red)**

**DW4P001ZF2**

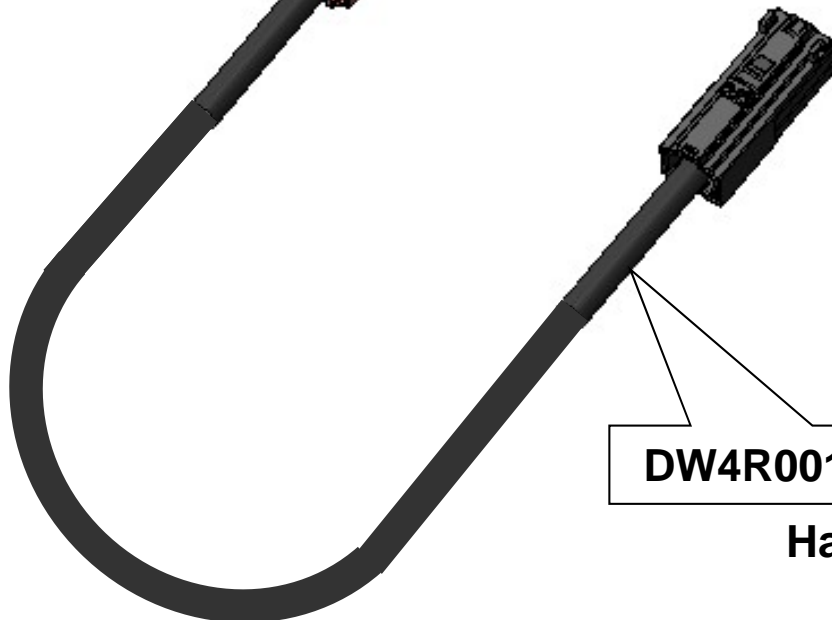


**DW4P001ZF1**

**Plug (Black)**

**DW4R001W0012880**

**Harness**



Technical Documents
---------------------

	Technical Document No. (Document Content)
Product Drawings	SJ112878 (DW4 Plug Black) SJ112879 (DW4 Plug Red) SJ112880 (DW4 Harness)
Specifications	JACS-30265
Handling Instructions	JAHL-30265

**Notice:**

1. The values specified in this brochure are only for reference. The products and their specifications are subject to change without notice. Contact our sales staff for further information before considering or ordering any of our products.

For purchase, a product specification must be agreed upon.

2. Users are requested to provide protection circuits and redundancy circuits to ensure safety of the equipment, and sufficiently review the suitability of JAE's products to the equipment.

3. The products presented in this brochure are designed for the uses recommended below.

We strongly suggest you contact our sales staff when considering use of any of the products in any other way than the recommended applications or for a specific use that requires an extremely high reliability.

(1) Applications that require consultation:

(i) Please contact us if you are considering use involving a quality assurance program that you specify or that is peculiar to the industry, such as:

Automotive electrical components, train control, telecommunications devices (mainline), traffic light control, electric power, combustion control, fire prevention or security systems, disaster prevention equipment, etc.

(ii) We may separately give you our support with a quality assurance program that

you specify, when you think of a use such as :

Aviation or space equipment, submarine repeaters, nuclear power control systems, medical equipment for life support, etc.

(2) Recommended applications include:

Computers, office appliances, telecommunications devices (terminals, mobile units), measuring equipment, audiovisual equipment, home electric appliances, factory automation equipment, etc

**Japan Aviation Electronics Industry, Limited**

\* The specifications in this brochure are subject to change without notice. Please contact JAE for information.